

PART OF SEC. 16, T.5N., R.1W., S.L.B.&M.
 AMENDED PLAT OF
BEN LOMOND HEIGHTS
 LOTS 1 TO 12 & 56 TO 58

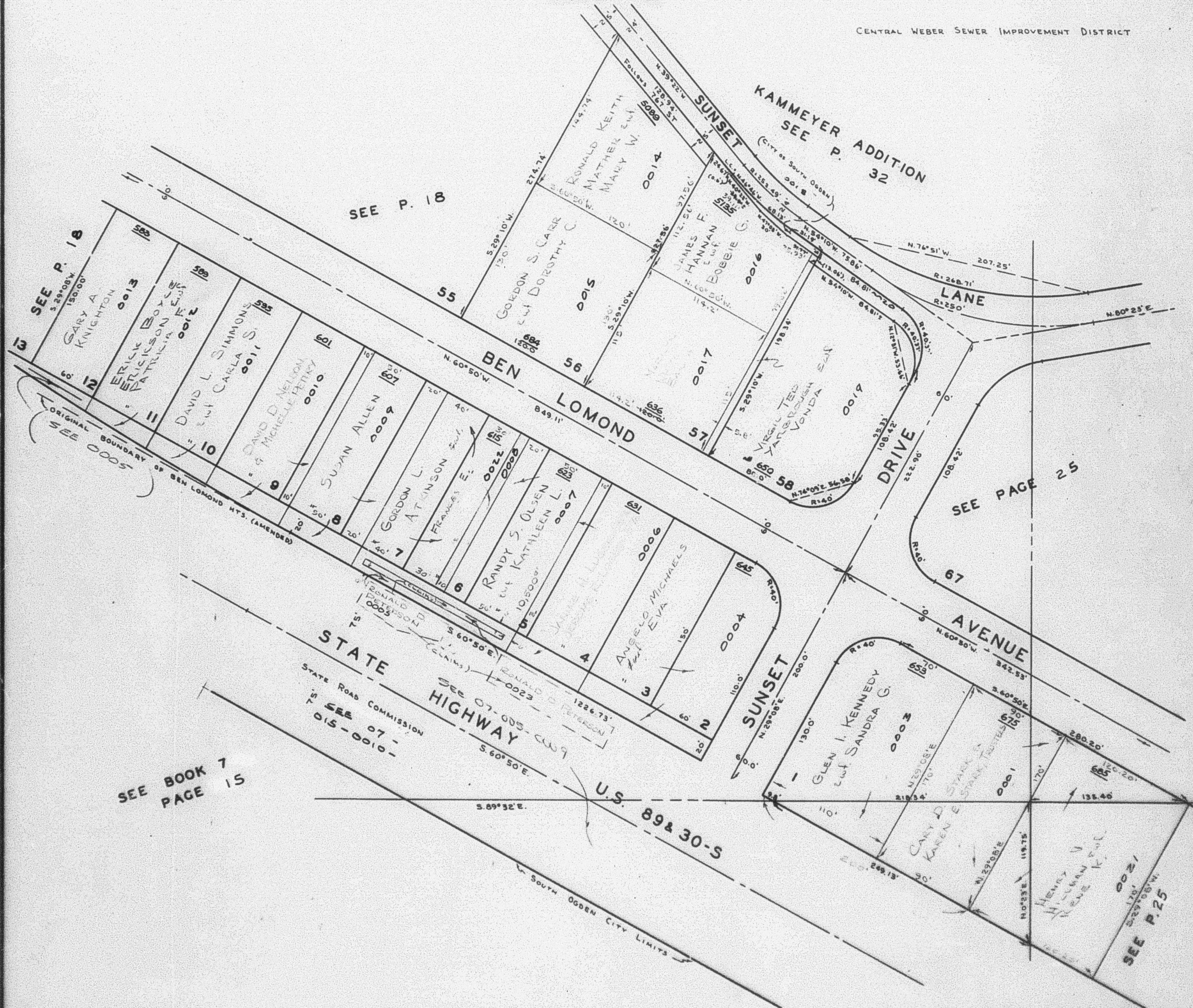
TAXING UNIT: 27

IN SOUTH OGDEN CITY

PREFIX: 07-017

SCALE 1" = 60'

CENTRAL WEBER SEWER IMPROVEMENT DISTRICT



SEE BOOK 7
 PAGE 15

SEE P. 25